

UF424 - 400lb Flake Ice Machine

Self Contained Undercounter Flaker with Storage

Features and Benefits

Reliability:

- Greaseless bearing for reduced maintenance.
- Stainless steel evaporator for maximum durability.
- 3 Year parts and labor warranty.
- Designed, engineered, assembled in the USA.

Ease of Use:

- External air filter for easy cleaning.
- Unit specific QR code for quick access to service manuals and warranty history.
- Slide back door allows easy access to ice in the bin.
- Intuitive control panel allows for quick and easy operation.
- Ice scoop and power cord included.

Compact Design:

- Only 24" wide, the ice maker can be placed in the tightest locations.
- Optional floor mount kit lowers height to 33.5" .

High Production:

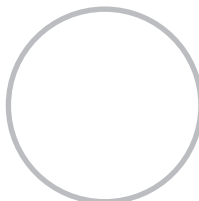
- Produces up to 440 lb (200 kg) per day and stores 80 lb (36 kg), meeting the ice demands for many different applications.

Environmentally Friendly:

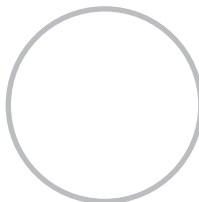
- Meets new US federal energy efficiency requirements.
- Meets US Safe Drinking Act low lead requirements.
- Non-ozone depleting R-134A refrigerant.



UF424 - 400lb Flake Ice Machine



Proven and reliable greaseless bearing will reduce maintenance.



Front accessible external air filter for easy cleaning.



24 Hour Volume Production

Air Cooled			Water Cooled		
70°F/21°C 50°F/10°C	Air Water	90°F/32°C 70°F/21°C	70°F/21°C 50°F/10°C	Air Water	90°F/32°C 70°F/21°C
440/200 lb/kg		310/141 lb/kg	440/200 lb/kg		330/150 lb/kg



Flake Ice



Cools more quickly than other ice forms. Ideal for use in healthcare, foodservice and school applications.



Certification



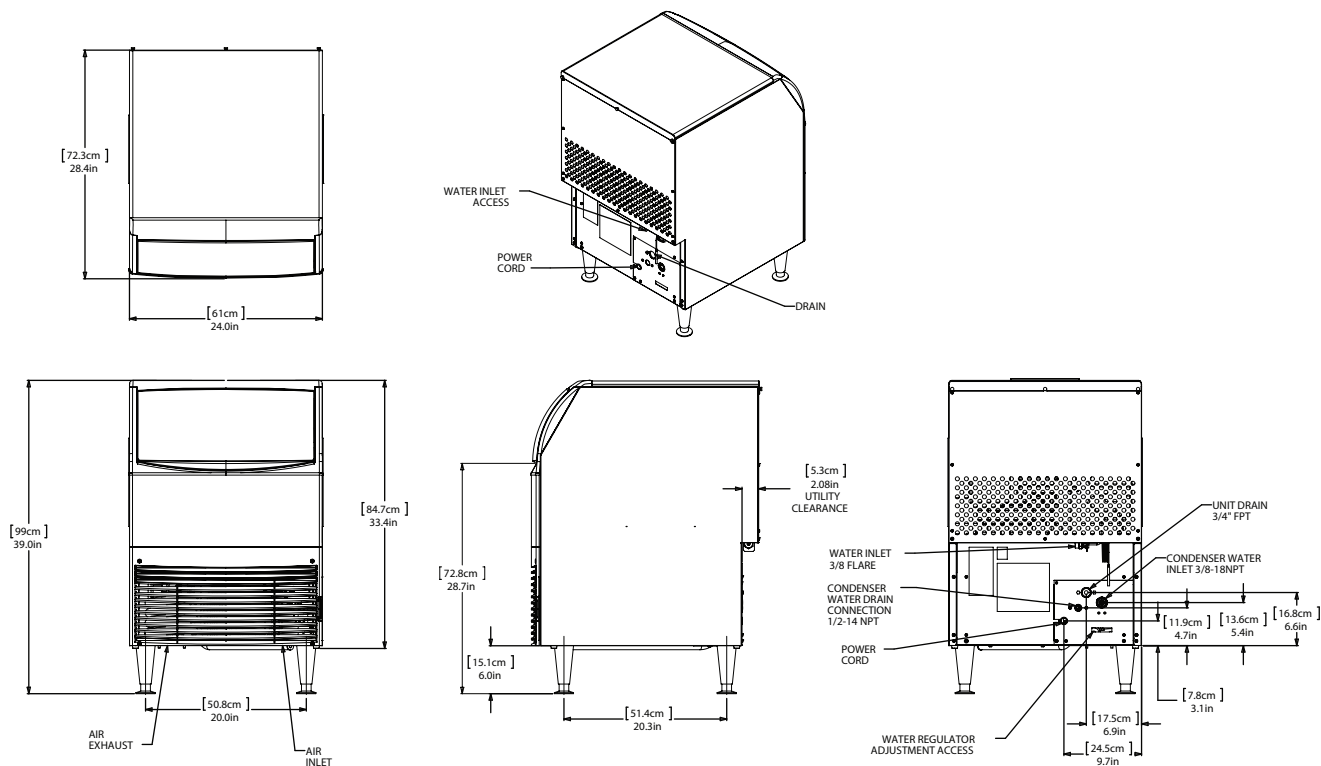
Warranty

- 3 years parts and labor on all components.
- 5 years parts on the compressor.
- Warranty valid in North, South & Central America for commercial installations.
- Contact factory for warranty in other regions.
- Residential Applications: 1 year parts and labor

UF424 - 400lb Flake Ice Machine

Self Contained Undercounter Flaker with Storage

UF424 - 400lb Flake Ice Machine



Specifications

Model Number	Condenser Unit	Storage Capacity lb/kg	Basic Electrical Volts/Hz/Phase	Max. Fuse Size or HACR Circuit Breaker (amps)	Min. Circuit Ampacity	Energy Consumption kWh/100 lb (45.4 kg) 90°F(32°C)/70°F(21°C)	Water Usage Gallons/100 lb (liters/45.4 kg)	
							Potable	Condenser 90°F(32°C)/70°F(21°C)
UF424A-1	Air	80/36	115/60/1	15	Cord	4.61	12.0/45.5	-
UF424W-1	Water	80/36	115/60/1	15	Cord	3.93	12.0/45.5	68



All Models

Dimensions (W x D x H):

Unit: 24" x 28.5" x 39"
(61.0 x 72.4 x 99.1 cm)

Includes 6" (15.24 cm) adjustable legs

Shipping Carton: 28.75" x 38.65" x 39"
(73.0 x 98.2 x 99.1 cm)

Shipping Weight: 200 lb / 91 kg

BTUs per hour: 3,000

Refrigerant: R-134A



Accessories

Model Number	Description
KLP85	Kit, Leg 6", Stainless Steel
KBC1	Kit, Casters
KUFM24	Floor mount kit. Lowers height to 33.5"



Operating Requirements

	Minimum	Maximum
Air Temperatures	50°F (10°C)	100°F (38°C)
Water Temperatures	40°F (4.4°C)	100°F (38°C)
Water Pressures	20 PSIG (1.4 bar)	80 PSIG (5.5 bar)
Electrical Voltage	-5%	+10%

Specifications and design are subject to change without notice.

Scotsman recommends all ice machines have water filtration. See Scotsman water filter specification sheet for details.